

**ALPHA PI SORORITY**

**PRESENTING: MONIQUE HEATHCOCK, CHW**

**DISCUSSION:**

Monique Heathcock presented the site plan and design rendering for the Alpha Pi sorority house which will be located on West Fraternity Drive. The house will have a capacity of around 52 beds. There will be parking spaces designated for house parent, a cook as well as ADA parking to tie in with exiting curb cuts and ramps. There will be scooter parking on the east side of the house and will be open to the general public. There will be no impact to properties on either side of the house.

**ACTION:**

The site plan was approved.

**UAA-53 FOOTBALL TRAINING CENTER**

**PRESENTING: STUART CULLEN, PD&C**

**DISCUSSION:**

Stuart Cullen presented the site plan and schematic design for the new Football Training Center Maintenance building expansion (2). This facility will be built on the former McKethan Baseball Stadium site and will directly tie in to football practice facility. Construction will begin mid-2020 after the baseball stadium is demolished. This facility will house all football operations. The training facility will include dining areas for athletes and administrative offices. Initial parking impact will 8-12 spaces with construction. Upon completion parking additions will include 18 visitor spaces in the front of the facility, 40 spaces (proposed Gated) on the east side, 3 ADA spaces in the front circle drive/drop-off area. Proposed is approximately 147 scooter spaces on the west side, noting there is no scooter parking at the O'Connell Center. Bike racks will be located in the front of the building.

**ACTION:**

The committee requested another design be presented. The committee approved the site plan for the project with the design presented at a future meeting.

**UAA-53 MAINTENANCE BUILDING**

**PRESENTING: STUART CULLEN, PD&C**

**DISCUSSION:**

Stuart Cullen presented the site plan and schematic design to expand the maintenance building expansion. This facility will be built on the former maintenance facility site.

**ACTION:**

Approved the schematic design of the building expansion.

**IFAS TEACHING GARDENS MULTI-PURPOSE BUILDING**

**PRESENTING: SEAN MOUNTAIN, IFAS**

**DISCUSSION:**

Sean Mountain presented a project to replace Buildings 0458 and 0455 with a single facility, the IFAS Teaching Garden Multi-Purpose Building. The building will have one ADA space and two delivery spaces. There will be no parking impact or loss with this project. The building will be fenced and there will be restricted keypad access. The project is working with Facilities Services regarding providing crosswalks.

**ACTION:**

The committee approved the project.

**UPDATE OF PARKING GUIDANCE TECHNOLOGIES FOR CAMPUS**

**PRESENTING: SCOTT WASHBURN, PATAAC**

**DISCUSSION:**

**ELECTRIC VEHICLE CHARGING STATIONS:**

**PRESENTED BY: MATT WILLIAMS, OFFICE OF SUSTAINABILITY**

**DISCUSSION:**

Matt Williams presented information regarding the electric vehicle charging stations on campus:

- There are 3 simple charging stations and 26 smart charging stations.
- Data gathering through Charge Point – Monitors charging process
  - ✓ Shows new users.
  - ✓ Information about the stations' users.
- A year of data available - Real time data availability for the charging stations.
- In 2018 there were 9440 charging hours.
- Data for 2019 will show, charging sessions' electrical usage, percent of occupancy of stations

The committee discussed:

- Enforcement – Overstaying, monitoring space overstays
- Time maximum – 4 hours
- Decal for charging spaces – UF and visitors
- Work day occupancy

**POLICY DISCUSSION RESTRICTING STUDENTS FROM EV STATIONS DURING NORMAL WORK HOURS**

**PRESENTING: BRUCE WELT, PATAAC**

**DISCUSSION:**

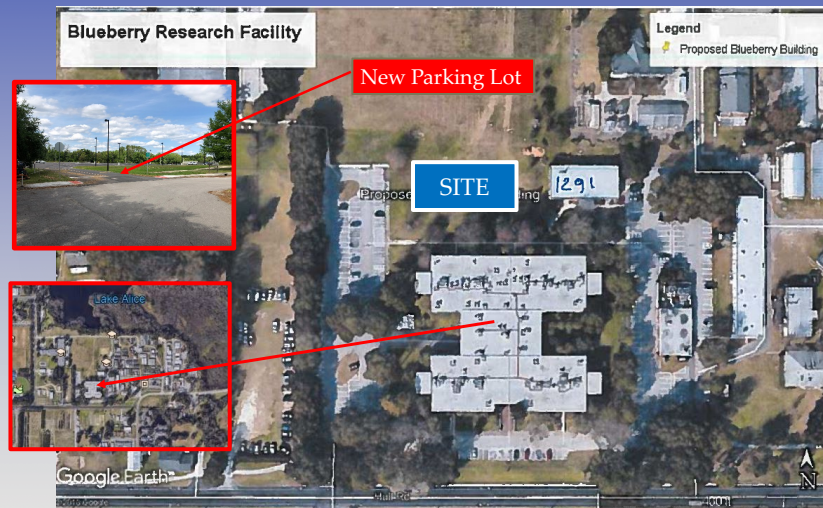
Bruce Welt presented for discussion the following points regarding restrictions of student use of electric vehicle (EV) charging stations:

- Allowance of students use of EV encourages driving to campus.
- Spaces meant for everyone are taken up by students.
- Suggestion of decal for EV stations.
- Restricted use for students during regular University business hours.

**ACTION:**

No action. Committee discussion only.

## Project Location



## Project Scope

- One story Brick Building
- Approximately 9,200 GSF
- Space Types
  - Research labs
  - Teaching labs
  - Classrooms
  - Office

**ACTION:**  
The committee approved the site/concept.